

DATASHEET

Name:
Type:
Designed by:

PURO SINGLE
Pendant Light
Lucie Koldova



DESCRIPTION

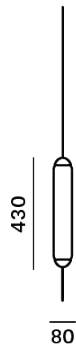
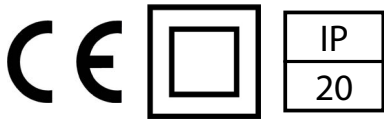
Puro is a boldly minimalistic variation on atmospheric pendant lights. Inspiration for the collection and its name come from the Spanish word for "cigar", which also means "pure" and is a reference to the composition's clean lines. The Puro collection comprises of single vertical or horizontal tube or a single bell light suspended beneath a vertical tube and dual bell lights suspended beneath a horizontal tube. The diffused glow of the tubes combines with that of the bells to elicit a dynamic ambience, while the alternating gloss and matte finishes provide a degree of provocation.



TECH. DESCRIPTION

Glass tube fitted with throughsockets with connectors on both sides. These sockets are designed for connection between canopy and luminair, and between luminair and bottom part Spotlight (PC1121).

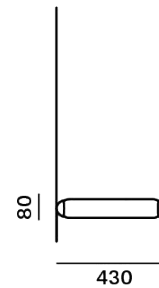
CERTIFICATES



Product ID: PC1157

Puro Single Vertical 400

2.8 kg
Glass, metal
2,000 mm
Ceiling
Indoor



Product ID: PC1158

Puro Single Horizontal 400

2.8 kg
Glass, metal
2,000 mm
Ceiling
Indoor

CONSTRUCTION SPECIFICATIONS

Weight:
Construction material:
Cord Length:
Mounting:
Environment:

ELECTRICAL SPECIFICATIONS

Input voltage [V]: 100 - 240 V
Frequency [Hz]: 50-60 Hz
Max. power [W]: 7 W
Coverage IP: 20
Socket: -
Light source: non-user replaceable LED module
Energy class: A+

Input voltage [V]: 100 - 240 V
Frequency [Hz]: 50-60 Hz
Max. power [W]: 7 W
Coverage IP: 20
Socket: -
Light source: non-user replaceable LED module
Energy class: A+



DATASHEET

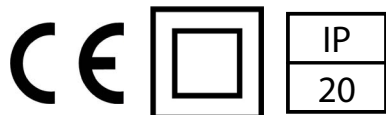
Name:
Type:
Designed by:

PURO SINGLE
Pendant Light
Lucie Koldova



BROKIS®

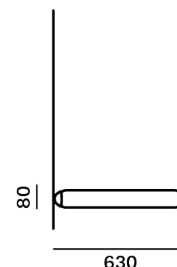
CERTIFICATES



Product ID: PC1013

Puro Single Vertical 600

3,2 kg
Glass, metal
2,000 mm
Ceiling
Indoor



Product ID: PC1010

Puro Single Horizontal 600

3,2 kg
Glass, metal
2,000 mm
Ceiling
Indoor

CONSTRUCTION SPECIFICATIONS

Weight:
Construction material:
Cord Length:
Mounting:
Environment:

ELECTRICAL SPECIFICATIONS

Input voltage [V]: 100 - 240 V
Frequency [Hz]: 50-60 Hz
Max. power [W]: 10 W
Coverage IP: 20
Socket: -
Light source: non-user replaceable LED module
Energy class: A+

100 - 240 V
50-60 Hz
10 W
20
-
non-user replaceable LED module
A+

LED SOURCE - PURO SINGLE 600

Socket: -
Type: LED module
Lamp wattage [W]: 10W
Input voltage [V]: 24 VDC
Energy Class: A+
Flux [lm]: 730lm
Light Colour [K]: 2700 K
CRI: 80+
Lifespan [h]: 20,000 hr
Dimmable: yes
Dimensions h x w [mm]: -



AM STUDIO CUSTOM LIGHTING INC | 80 KINCORT ST. TORONTO M6M 5G1 | 416 783 4100
INFO@AMSTUDIO.CA | AMSTUDIO.CA

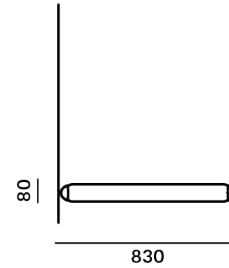
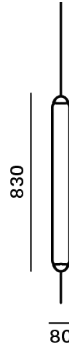
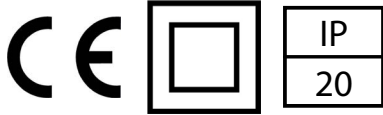
DATASHEET

Name:
Type:
Designed by:

PURO SINGLE
Pendant Light
Lucie Koldova



CERTIFICATES



Product ID: PC1014

Product ID: PC1011

CONSTRUCTION SPECIFICATIONS

Weight:
Construction material:
Cord Length:
Mounting:
Environment:

Puro Single Vertical 800

3.7 kg
Glass, metal
2,000 mm
Ceiling
Indoor

Puro Single Horizontal 800

3.7 kg
Glass, metal
2,000 mm
Ceiling
Indoor

ELECTRICAL SPECIFICATIONS

Input voltage [V]:
Frequency [Hz]:
Max. power [W]:
Coverage IP:
Socket:
Light source:
Energy class:

100 - 240 V
50-60 Hz
15 W
20
-
non-user replaceable LED module
A+

100 - 240 V
50-60 Hz
15 W
20
-
non-user replaceable LED module
A+

LED SOURCE - PURO SINGLE 800

Socket:
Type:
Lamp wattage [W]:
Input voltage [V]:
Energy Class:
Flux [lm]:
Light Colour [K]:
CRI:
Lifespan [h]:
Dimmable:
Dimensions hxw [mm]:

-
LED module
15W
24 VDC
A+
1100lm
2700 K
80+
20,000 hr
yes
-



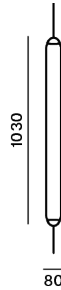
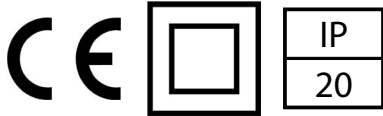
DATASHEET

Name:
Type:
Designed by:

PURO SINGLE
Pendant Light
Lucie Koldova



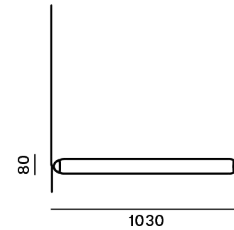
CERTIFICATES



Product ID: PC1015

Puro Single Vertical 1000

4.9 kg
Glass, metal
2,000 mm
Ceiling
Indoor



Product ID: PC1012

Puro Single Horizontal 1000

4.9 kg
Glass, metal
2,000 mm
Ceiling
Indoor

CONSTRUCTION SPECIFICATIONS

Weight:
Construction material:
Cord Length:
Mounting:
Environment:

ELECTRICAL SPECIFICATIONS

Input voltage [V]:
Frequency [Hz]:
Max. power [W]:
Coverage IP:
Socket:
Light source:
Energy class:

100 - 240 V
50-60 Hz
20 W
20

-
non-user replaceable LED module
A+

100 - 240 V
50-60 Hz
20 W
20

-
non-user replaceable LED module
A+

LED SOURCE - PURO SINGLE 1000

Socket:
Type:
Lamp wattage [W]:
Input voltage [V]:
Energy Class:
Flux [lm]:
Light Colour [K]:
CRI:
Lifespan [h]:
Dimmable:
Dimensions h x w [mm]:

-
LED module
20W
24 VDC
A+
1460lm
2700 K
80+
20,000 hr
yes
-



DATASHEET

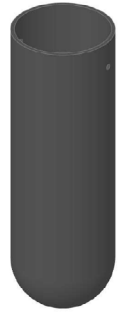
Name:
Type:
Designed by:

PURO SINGLE
Pendant Light
Lucie Koldova

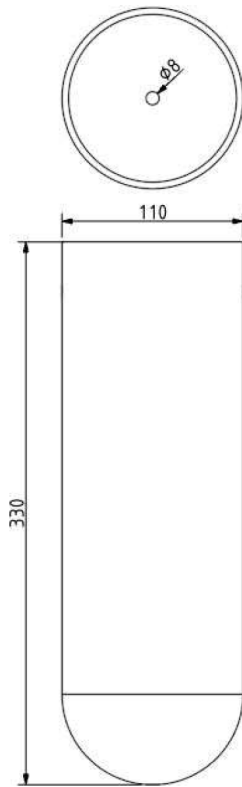


CEILING CANOPY

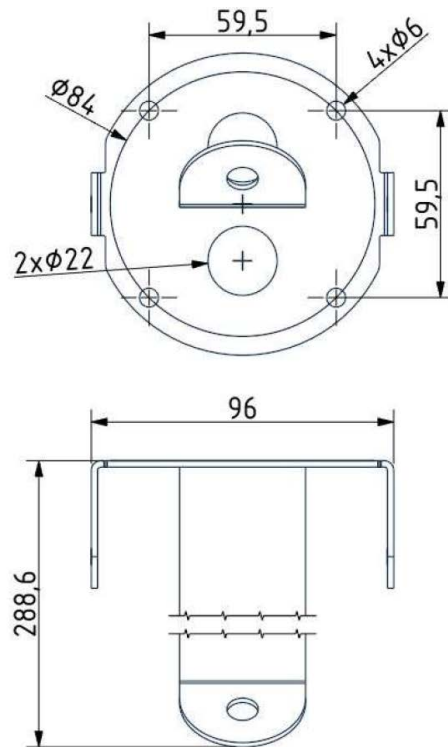
Dimensions \varnothing x w [in/mm] 4.33" x 13" / 110 x 330 mm
Weight [kg] 1.3 kg
Material glass



Drawing



Canopy bracket



DATASHEET

Name:
Type:
Designed by:

PURO SINGLE
Pendant Light
Lucie Koldova



PRODUCT DETAILS

Glass Colour

Triplex opal	A	CGC39
Dark grey-opaline	B	CGC1507

Glass Surface

Acid-etched both side surface	A	CGSU881
-------------------------------	---	---------

Body Finish

Metal - black matte powder coating	A	CCS846
Metal - white matte powder coating	A	CCS845

Canopy finish

Glass - black	A	CCSC2404
Glass - white	A	CCSC2403
Trimless - cable version - white structure	A	CCSC2903
Trimless - cable version - black structure	A	CCSC2904

Cable colour

Textile cable - Black	A	CECL519
Textile cable - white	A	CECL521

LED Source

600mm, 24V, LED, 13W, 2700K, 1105lm, RA90, DIM	A	LEDS1926
600mm, 24V, LED, 13W, 4000K, 1220lm, RA90, DIM	A	LEDS1927
600mm, 24V, LED, 13W, 5000K, 1300lm, RA90, DIM	A	LEDS1928
800mm, 24V, LED, 18W, 2700K, 1530lm, RA90, DIM	A	LEDS1929
800mm, 24V, LED, 18W, 4000K, 1695lm, RA90, DIM	A	LEDS1930
800mm, 24V, LED, 18W, 5000K, 1810lm, RA90, DIM	A	LEDS1931
1000mm, 24V, LED, 25W, 2700K, 1910lm, RA90, DIM	A	LEDS1932
1000mm, 24V, LED, 25W, 4000K, 2115lm, RA90, DIM	A	LEDS1933
1000mm, 24V, LED, 25W, 5000K, 2260lm, RA90, DIM	A	LEDS1934